

DORMER

(window and/or trim projecting from roof)

SOFFIT (under roof eaves)

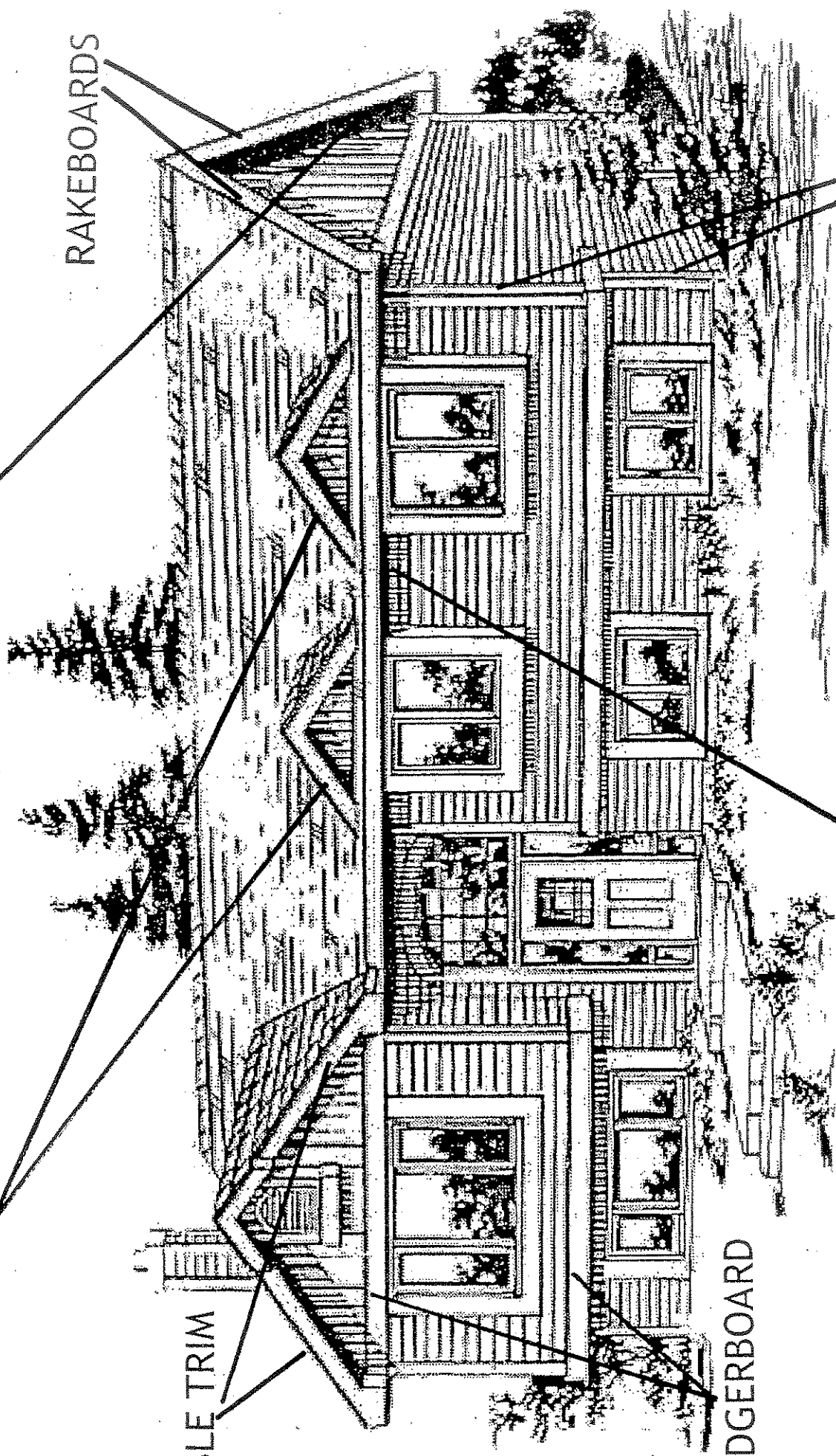
RAKEBOARDS

SHINGLE TRIM

LEDGERBOARD

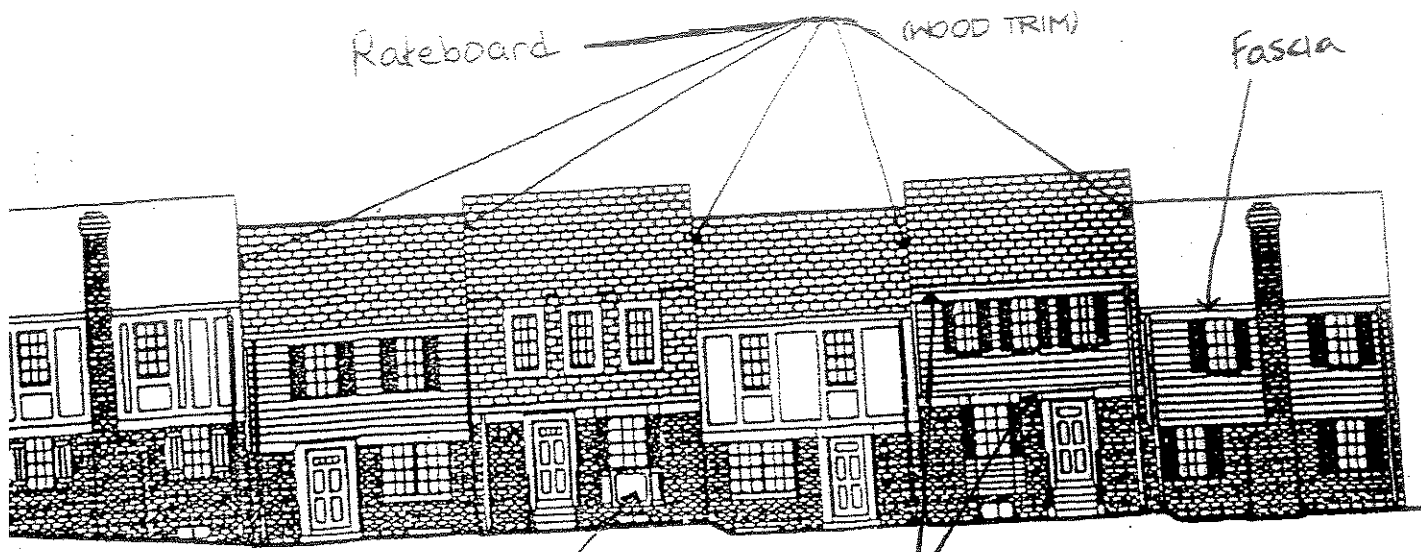
FASCIA (behind gutter)

VERTICAL TRIM



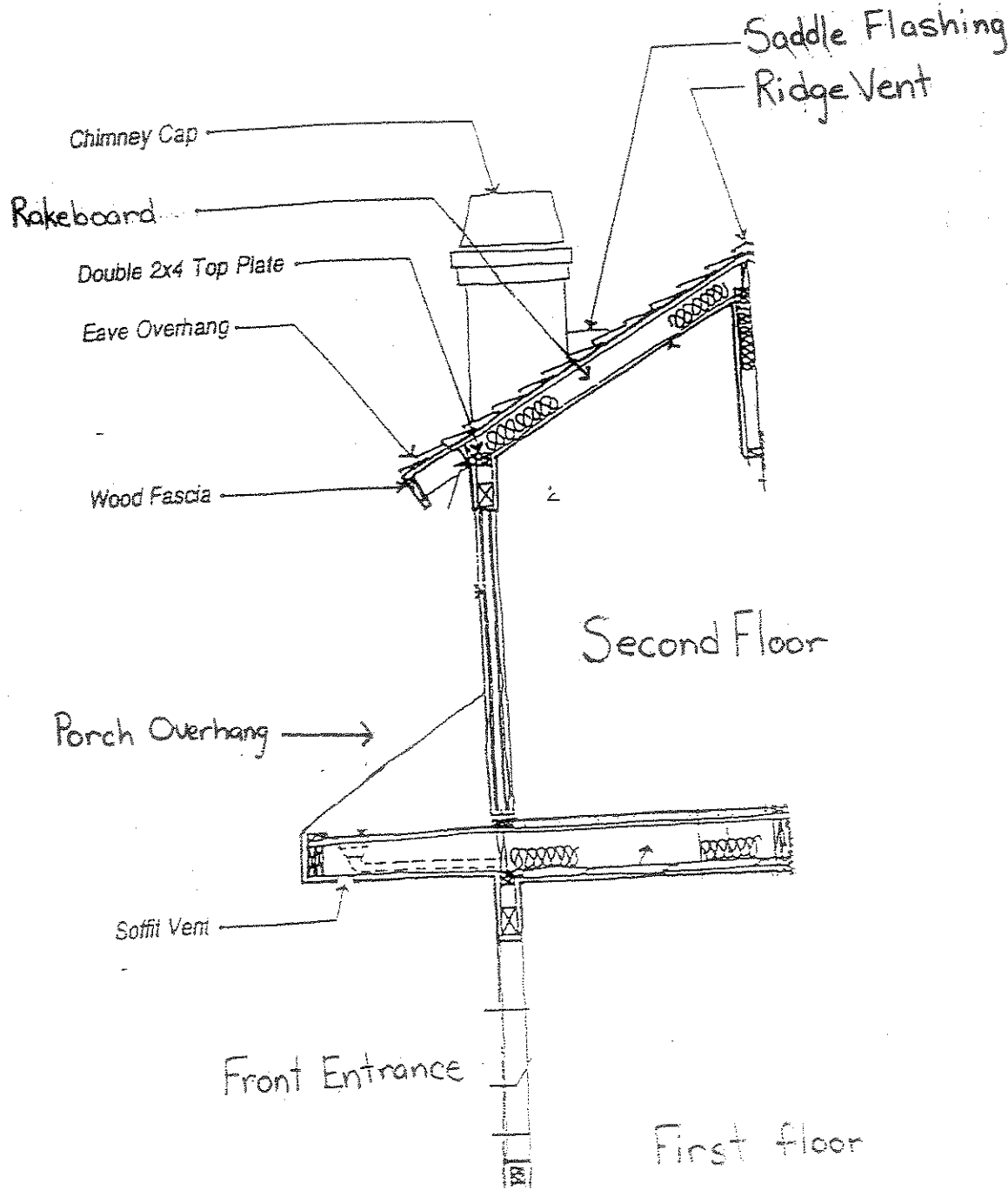


Rakeboards on townhouses are usually either front or rear but occasionally both, in the case of an end unit. Your house may have from one to four rakeboards. They are the hardest part of the house to reach and see. To see rakeboards you have to stand in front of or behind the neighboring property and look at the side of the roof. When painting a rakeboard make sure the whole board is painted from the front overhang all the way to the roof peak.



Window Box Bay

Bandboard



Saddle Flashing
Ridge Vent

Chimney Cap

Rakeboard

Double 2x4 Top Plate

Eave Overhang

Wood Fascia

Second Floor

Porch Overhang

Soffit Vent

Front Entrance

First floor